

SABER®





THE SABER® EXPERIENCE

PATENTED COOKING SYSTEM

Heats evenly, eliminates flare-ups and uses 30% less propane

EASY-TO-USE

Reliable electronic ignition at each burner
for an easy start every time

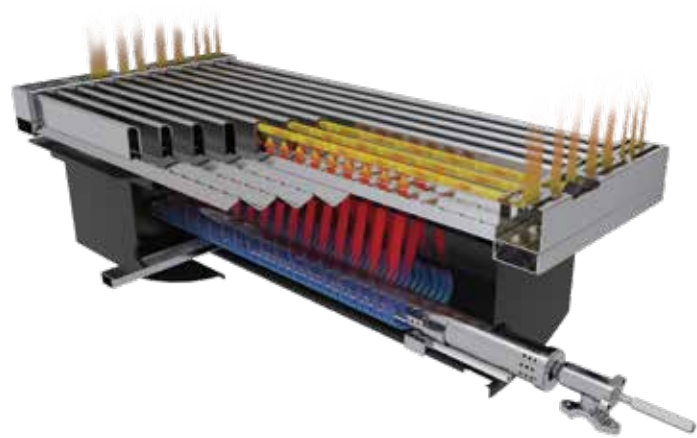
WIDE TEMPERATURE RANGE

Grill any way you like, from searing at high temperatures to
low and slow roasting

EASILY CONVERT BETWEEN LP AND NG

Change fuel source with our patented conversion kits

SABER® COOKING SYSTEM



NO FLARE-UPS

Eliminate flare-ups with the patented closed grate cooking system

JUICY AND TENDER RESULTS

Controls air flow away from food to lock in more natural flavors and juices

FAST, EFFICIENT, EVEN HEAT

Pre-heats to searing temperatures within 12 minutes

EASY-TO-USE, SIMPLE CLEAN-UP

Burn off and brush away

SABER® CONSTRUCTION



LONG-LASTING MATERIALS

Premium 304 stainless steel for maintenance-free use

SUPERIOR STRENGTH

No-flex lid design for smooth operation; rigid shelves and cart structure

VERSATILE GRILLING

Multi-position warming rack enables slow roasting, warming and easy storage when not in use

CORROSION-RESISTANT

Nylon casters with 304 stainless steel hardware

SELECT SERIES

The SABER® Select Series features two full-size cabinet grills designed with premium construction for long-lasting durability. These sleek grills have large cooking surfaces with commercial-grade stainless steel grates and a built-in clean setting for easier grate cleaning. Spacious side shelves fold down for compact storage, and blue LED lights add sophisticated style. Integrated tool hooks offer a place to hold tools, and an included condiment basket provides additional storage.



Accent LEDs light up when grilling at night



Side shelves fold down for compact storage



Door-mounted hooks hold tools

FEATURES:

- Patented SABER® cooking system
- Premium, commercial-grade stainless steel construction
- Lid-mounted temperature gauge
- Easily convert fuel types with kit (sold separately)

SELECT 3-BURNER GRILL R42SC0321

Assembled dimensions:
54.6" W x 23.4" D x 48.1" H



| Total sq. in. | BTUs | Fuel |
|---------------|--------|------|
| 575 | 25,500 | LP |

- Porcelain-coated warming rack for cooking versatility

SELECT 4-BURNER GRILL R52SC0421

Assembled dimensions:
60.7" W x 23.4" D x 48.1" H



| Total sq. in. | BTUs | Fuel |
|---------------|--------|------|
| 720 | 32,000 | LP |

- High-output side burner to prepare sauces and sides
- Porcelain-coated warming rack for cooking versatility
- 13,000 BTU side burner for warming side dishes



DELUXE SERIES

The SABER® Deluxe Series features three full-sized cast black grills and two full-sized cast stainless grills. The Deluxe Series is centered around the die-cast aluminum lid end caps that provide superior strength and durability. These grills have enclosed carts, grate-level temperature gauges and an electrode at each burner. The cast black grills feature a sleek, powder-coated finish, whereas the cast stainless grills feature more premium 304 stainless steel.



Push-button electronic ignition with an electrode at each burner



Multiple-position enamel warming rack with slow roasting capability

FEATURES:

- Patented SABER® cooking system
- All stainless steel is 304-grade non-magnetic
- Grate-level temperature gauges
- Four heavy-duty nylon locking casters
- Easily convert fuel types with kit (sold separately)

DELUXE BLACK 2-BURNER GRILL R33CC1017

Assembled dimensions:
48 1/2" W x 25" D x 48 13/32" H



| Total sq. in. | BTUs | Fuel |
|---------------|--------|------|
| 445 | 16,000 | LP |

- Heavy-duty powder-coated shelves with die-cast tool holders

DELUXE BLACK 3-BURNER GRILL R50CC0617

Assembled dimensions:
56 1/2" W x 25" D x 48 13/32" H



| Total sq. in. | BTUs | Fuel |
|---------------|--------|------|
| 675 | 24,000 | LP |

- Fully enclosed powder-coated cart with double doors
- Powder-coated wire storage shelf in cabinet

DELUXE BLACK 4-BURNER GRILL R67CC1117

Assembled dimensions:
65 3/32" W x 25" D x 48 13/32" H



| Total sq. in. | BTUs | Fuel |
|---------------|--------|------|
| 895 | 32,000 | LP |

- Heavy-duty 304 stainless steel shelves with towel bar and die-cast tool holders
- 10,000 BTU side burner for warming side dishes

DELUXE STAINLESS 2-BURNER GRILL R33CC0317

Assembled dimensions:
48 1/2" W x 25" D x 48 13/32" H



**EZ
NG**

| Total sq. in. | BTUs | Fuel |
|---------------|--------|------|
| 445 | 16,000 | LP |

- Heavy-duty 304 stainless steel shelves with die-cast tool holders
- Fully enclosed powder-coated cart with a 304 stainless steel single door
- Nickel plated die-cast control knobs

DELUXE STAINLESS 3-BURNER GRILL R50CC0317

Assembled dimensions:
56 1/2" W x 25" D x 48 13/32" H



**EZ
NG**

| Total sq. in. | BTUs | Fuel |
|---------------|--------|------|
| 675 | 24,000 | LP |

- Heavy-duty 304 stainless steel shelves with towel bar and die-cast tool holders
- Fully enclosed powder-coated cart with 304 stainless steel double doors
- 10,000 BTU side burner for warming side dishes



PREMIUM SERIES

The SABER® Premium Series features two full-sized cart grills, two built-in grills and a built-in dual-control burner. The Premium Series is centered around the seamless welded premium 304 stainless steel lid that provides premium look and weather-resistance. It features internal halogen lights and a multi-functional 304 stainless steel warming rack. The cart grills have enclosed premium 304 stainless steel carts and a dual-control side burner with a reversible grate.



Dual-control side burner for warming or cooking dishes



Internal halogen lights for nighttime grilling



Multi-functional premium 304 stainless steel warming rack with slow roasting capability

FEATURES:

- All 304 stainless steel cart construction
- Heavy-duty 304 stainless steel shelves with die cast tool holders
- Easily convert fuel types with kit (sold separately)

PREMIUM 3-BURNER GRILL R50SC0017

Assembled dimensions:
56 1/2" W x 25" D x 48 13/32" H



| Total sq. in. | BTUs | Fuel |
|---------------|--------|------|
| 675 | 24,000 | LP |

- 18,000 BTU dual-control side burner
- Fully enclosed 304 stainless steel cart with double doors
- 304 stainless steel wire storage shelf in cabinet

PREMIUM 4-BURNER GRILL R67SC0017

Assembled dimensions:
65 3/32" W x 25" D x 48 13/32" H



| Total sq. in. | BTUs | Fuel |
|---------------|--------|------|
| 895 | 32,000 | LP |

- Fully enclosed 304 stainless steel cart with double doors
- 304 stainless steel wire storage shelf in cabinet
- 18,800 BTU dual control side burner



PREMIUM 3-BURNER BUILT-IN GRILL

R50SB0417

Cut-Out dimensions:
28 1/4" W x 22" D x 9" H
Assembled dimensions:
31 5/8" W x 26 1/2" D x 21 5/8" H



| Total sq. in. | BTUs | Fuel |
|---------------|--------|------|
| 675 | 24,000 | NG |

- High strength mounting flanges
- Includes appliance style natural gas regulator

PREMIUM 4-BURNER BUILT-IN GRILL

R67SB0317

Cut-Out dimensions:
37" W x 22" D x 9" H
Assembled dimensions:
40 3/16" W x 26 1/2" D x 21 5/8" H



| Total sq. in. | BTUs | Fuel |
|---------------|--------|------|
| 895 | 32,000 | NG |

- High strength mounting flanges
- Includes appliance style natural gas regulator

PREMIUM DUAL-CONTROL BUILT-IN BURNER

K00SB1814

Cut-Out dimensions:
11 7/8" W x 20 3/4" D x 8 11/16" H
Assembled dimensions:
14 15/16" W x 26 1/8" D x 9 1/4" H



| BTUs | Fuel |
|--------|------|
| 18,000 | NG |

- 2 individually controlled stainless steel tube burners for low or high heat
- Reversible heavy-duty cast-iron grate for flat-top or round surface
- Great for wok or skillet cooking, boiling or frying



ELITE SERIES

The Elite Series features high-style design accents of bright annealed 304 stainless steel with mirror-polished edges and LED lighting over each control knob. The Elite cart grills have a 304 stainless steel LP tank tray and a condiment basket, whereas Elite built-in grills have 304 stainless steel, high polish mounting flanges. All Elite grills include a marine-grade cover, stainless rotisserie motor kit and rod.



Firebox and internal components constructed entirely with premium 304 stainless steel



LED lights above the knobs and internal halogen lights for nighttime grilling



Includes stainless steel rotisserie kit, rod and marine grade grill cover

FEATURES:

- All premium 304 stainless steel construction
- Mirror-polished edges and handles
- Premium 304 stainless steel pull out tank tray and condiment basket

ELITE 2-BURNER GRILL R33SC0717

Assembled dimensions:
48 1/2" W x 25" D x 48 13/32" H



| Total sq. in. | BTUs | Fuel |
|---------------|--------|------|
| 445 | 16,000 | LP |

- Single internal halogen light

ELITE 3-BURNER GRILL R50SC1417

Assembled dimensions:
56 1/2" W x 25" D x 48 13/32" H



| Total sq. in. | BTUs | Fuel |
|---------------|--------|------|
| 675 | 24,000 | LP |

- Two internal halogen lights
- 18,000 BTU dual-control side burner
- 304 stainless steel storage shelf in cabinet

ELITE 4-BURNER GRILL R67SC0917

Assembled dimensions:
65 3/32" W x 25" D x 48 13/32" H



| Total sq. in. | BTUs | Fuel |
|---------------|--------|------|
| 895 | 32,000 | LP |

- Single door and 2 drawers
- 18,000 BTU dual-control side burner
- 304 stainless steel side burner grate

ELITE 3-BURNER BUILT-IN GRILL

R50SB1517

Cut-Out dimensions:

28 1/4" W x 22" D x 9" H

Assembled dimensions:

31 5/8" W x 26 1/2" D x 21 5/8" H



| Total sq. in. | BTUs | Fuel |
|---------------|--------|------|
| 675 | 24,000 | NG |

- Heavy duty 304 stainless steel high polish mounting flanges
- Includes appliance style natural gas regulator

ELITE 4-BURNER BUILT-IN GRILL

R67SB1017

Cut-Out dimensions:

37" W x 22" D x 9" H

Assembled dimensions:

40 3/16" W x 26 1/2" D x 21 5/8" H



| Total sq. in. | BTUs | Fuel |
|---------------|--------|------|
| 895 | 32,000 | NG |

- Heavy duty 304 stainless steel high polish mounting flanges
- Includes appliance style natural gas regulator

ELITE DUAL-CONTROL BUILT-IN SIDE BURNER

K00SB5317

Cut-Out dimensions:

11 7/8" W x 20 3/4" D x 8 11/16" H

Assembled dimensions:

15 1/4" W x 26 1/4" D x 11 1/2" H



| BTUs | Fuel |
|--------|------|
| 18,000 | NG |

- Integrated lid design for superior weather-resistance
- 2 individually controlled tube burners for low or high heat
- 304 stainless steel grate
- Great for wok and skillet cooking, boiling or frying



OUTDOOR KITCHEN COMPONENTS



OUTDOOR 4.1 CU. FT. STAINLESS STEEL REFRIGERATOR K00AA3314

Cut-Out dimensions:
21 1/4" W x 24" D x 33 5/8" H
Assembled dimensions:
20 1/2" W x 22 5/8" D x 33 1/16" H



OUTDOOR 4.1 CU. FT. STAINLESS STEEL REFRIGERATOR TRIM KIT K00AA3514

Cut-Out dimensions:
21 1/4" W x 24" D x 33 5/8" H
Assembled dimensions:
23 1/8" W x 1 3/4" D x 34 11/16" H



DROP-IN ICE CHEST K00AA3414

Cut-Out dimensions:
23" W x 17 1/16" D x 12" H
Assembled dimensions:
24 1/16" W x 18 1/4" D x 13" H



PAPER TOWEL HOLDER K00AA3014

Cut-Out dimensions:
13 1/8" W x 7 1/8" D x 8" H
Assembled dimensions:
14 13/16" W x 8 1/16" D x 9 5/8" H





**26" X 19" SINGLE ACCESS DOOR
K00AA2614**

Cut-Out dimensions:
17 1/8" W x 15/16" D x 24 1/16" H
Assembled dimensions:
18 15/16" W x 1 7/8" D x 25 15/16" H



**24" SINGLE STORAGE DRAWER
K00AA2714**

Cut-Out dimensions:
23 3/16" W x 19 9/16" D x 3 3/4" H
Assembled dimensions:
24 13/16" W x 20 7/8" D x 5 7/16" H



**3-DRAWER & DOOR COMBO
K00AA3214**

Cut-Out dimensions:
33 11/16" W x 17 3/16" D x 24" H
Assembled dimensions:
35 1/2" W x 18 1/16" D x 25 3/4" H



**3-BURNER BUILT-IN GRILL LINER
K50AA0918**

Cut-Out dimensions:
28 3/4" W x 22" D x 9" H
Assembled dimensions:
28 1/2" W x 20" D x 8 13/16" H



**19" X 26" SINGLE ACCESS DOOR
K00AA2514**

Cut-Out dimensions:
24 1/16" W x 15/16" D x 17 1/8" H
Assembled dimensions:
25 15/16" W x 1 7/8" D x 18 7/8" H



**2-DRAWER CABINET
K00AA1914**

Cut-Out dimensions:
14 3/16" W x 17 3/16" D x 20 1/4" H
Assembled dimensions:
15 15/16" W x 18 1/8" D x 21 15/16" H



**LP TANK DRAWER
K00AA2914**

Cut-Out dimensions:
13 3/4" W x 16" D x 20 1/8" H
Assembled dimensions:
15 3/8" W x 16 15/16" D x 21 7/8" H



**4-BURNER BUILT-IN GRILL LINER
K67AA0618**

Cut-Out dimensions:
37 1/4" W x 22" D x 9" H
Assembled dimensions:
37" W x 20" D x 8 13/16" H



**24" X 31" DOUBLE ACCESS DOORS
K00AA2314**

Cut-Out dimensions:
26 1/4" W x 15/16" D x 20 1/4" H
Assembled dimensions:
30 3/16" W x 1 7/8" D x 24 3/16" H



**3-DRAWER CABINET
K00AA2814**

Cut-Out dimensions:
16 5/8" W x 17 3/16" D x 24 1/16" H
Assembled dimensions:
18 1/4" W x 18 1/8" D x 25 9/16" H



**TRASH DRAWER
K00AA6418**

Cut-Out dimensions:
12 5/16" W x 20 1/8" D x 23 13/16" H
Assembled dimensions:
14 1/8" W x 21" D x 25 5/8" H



**3-BURNER BUILT-IN GRILL FRONT TRIM KIT
K50AA3318**

Cut-Out dimensions:
28 3/4" W x 22" D x 9" H
Assembled dimensions:
30 3/4" W x 1 3/4" D x 10" H



**24" X 39" DOUBLE ACCESS DOORS
K00AA2414**

Cut-Out dimensions:
34 1/4" W x 15/16" D x 20 1/4" H
Assembled dimensions:
38 1/16" W x 1 7/8" D x 24 3/16" H



**2-DRAWER & DOOR COMBO
K00AA3114**

Cut-Out dimensions:
28 11/16" W x 17 3/16" D x 20 1/4" H
Assembled dimensions:
30 9/16" W x 18 1/4" D x 21 15/16" H



**TRASH CHUTE
K00AA6518**

Cut-Out dimensions:
8 7/8" W x 12 13/16" D x 5 7/8" H
Assembled dimensions:
13 13/16" W x 16 1/2" D x 7 3/8" H



**4-BURNER BUILT-IN GRILL FRONT TRIM KIT
K67AA1818**

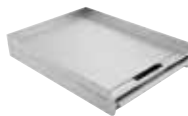
Cut-Out dimensions:
37 1/4" W x 22" D x 9" H
Assembled dimensions:
39 1/4" W x 1 3/4" D x 10" H

ACCESSORIES



EZ TEMP™ DIGITAL MEAT THERMOMETER A00AA3814

- 5-sec. quick-response time provides fast, accurate results
- 7 meat types and doneness levels with audible USER-defined temperature alarm
- Easy-to-read backlit LCD readout



STAINLESS STEEL EZ GRIDDLE A00AA1313

- Constructed with heavy-duty stainless steel with bracing to prevent flexing
- EZ clean grease tray
- Restaurant-style cooking



PREMIUM 3-PIECE TOOL SET A00AA0112

- Includes a spatula, fork and locking tongs
- Constructed with heavy-duty stainless steel
- Soft grip handles with tool holders



XL TONGS A00AA6318

- Extra-long 18" tongs keep hands safely away from the high heat of the grill
- Constructed with heavy-duty stainless steel
- Soft grip handle with tool holder
- Dishwasher-safe



MULTI-PURPOSE GRILL BASKET A00AA6819

- Ideal for quesadillas, vegetables, or fish
- Basket halves lock together to secure food
- Dishwasher-safe



ALUMINUM PIZZA PEEL A00AA6019

- Ideal for baking pizza, bread, and more
- Soft grip handle with tool holder
- Dishwasher-safe



CORDIERITE PIZZA STONE A00AA6719

- Cordierite stone spreads heat evenly, creating crispy crust on pizza or bread
- Heat-resistant material lets you place the stone directly on your grill
- Durable, crack-resistant cooking surface



ROTISSERIE KIT WITH CASE A00AA1018

- Premium 304 stainless steel for added durability
- Heavy-duty motor can roast up to 20 pounds of meat
- Includes motor, 2 meat forks, roller-bearing rod support, mounting brackets and a storage case



ROTISSERIE SPIT RODS

- 20-lb capacity
- Premium 304 stainless steel for added durability

2-BURNER ROD A33AA0212

3-BURNER ROD A50AA0212

4-BURNER ROD A67AA0212



ROTISSERIE FORKS (2-PACK) A00AA6918

- Constructed with premium 304 stainless steel
- Large grip set screw for quick and easy adjustments
- Fits up to 5/16" square rotisserie spit rods



STAINLESS STEEL POULTRY ROASTER A00AA7618

- Designed for roasting poultry and grilling vegetables
- Add wine, beer, juice, or other liquid for more flavor
- Built with premium 304 stainless steel with a removable aluminum cup
- Dishwasher-safe



XL ROASTING RACK A00AA6618

- Roast up to 3 slabs of ribs or multiple large roasts or poultry
- Position a water pan or wood chips underneath for added smoke flavor or moisture
- Constructed with premium 304 stainless steel
- Dishwasher-safe



HIGH-TEMP GRILL GLOVES A00AA6118

- Non-slip silicone areas for gripping hot items
- Machine-washable
- Heat resistant up to 425°F



TANK HOLE COVER A00AA6218

- Premium 304 stainless steel construction for durability
- For use with any SABER® cart grill converted to natural gas
- Increases storage area inside the cart



COOL TOUCH GRILL BRUSH A00YY1515

- Abrasive nylon bristles last 5-times longer than standard wire bristles
- Clean before or after cooking, making sure grill is cool to the touch
- Removable brush head for easy cleaning or replacement



GRILL CLEANER & POLISH A00YY5717

- For use on stainless steel, painted steel, cast iron and other exterior grill surfaces
- Foaming cleaner clings to surface to break up stains and leaves behind a polished finish with a protective layer
- 13 oz. aerosol can



EZ NATURAL GAS CONVERSION KITS

- Easily, quickly and safely convert your SABER® grill from liquid propane to natural gas



A00AA0412

- Only fits models ending in "16" or lower
- Includes appliance style natural gas regulator, 10-foot NG hose, die-cast knobs for conversion and LP orifice-removal tool



A00AA5417

- Only fits models ending in "17" or higher
- Includes appliance style natural gas regulator, 10-foot hose, 8-inch hose, stop pins and orifice tool



COOL TOUCH GRILL BRUSH REPLACEMENT HEAD A00YY1615

- Ceramic infused nylon bristles last 5-times longer and clean safer
- For use with Cool Touch brushes
- Dishwasher-safe



GRATE CLEANER A00YY5917

- Non-toxic formula safe for all cooking surfaces
- Foaming cleaning clings to hard to reach areas and cleans away even your toughest baked-on food and oil
- 17 oz. aerosol can



EZ LP CONVERSION KITS

- Easily, quickly and safely convert your SABER® grill or dual side burner from natural gas to liquid propane



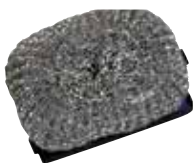
A00AA0912

- Only fits models ending in "16" or lower
- Includes LP gas regulator and hose, tank-retention hook, die-cast knobs for conversion and LP orifice-installation tool



A00AA5517

- Only fits models ending in "17" or higher
- Includes LP gas regulator and hose, tank retention hook, LP orifices and orifice tool



MESH GRILL BRUSH REPLACEMENT HEAD A00YY0712

- 304 stainless steel replacement heads for SABER® grill brush
- Dishwasher-safe
- Pack of 2



REVITALIZING POLISH A00YY7919

- For use on all metals, fiberglass, gel-coat, Plexiglass, and painted surfaces
- Clean, polish, and protect with one use
- 8 oz. bottle



DUAL-OUTLET K00AA4615

- Connects built-in grill and side burner to one LP Tank
- Only fits models ending in "16" or lower
- Includes LP gas regulator and hose, tank-retention hook, die-cast knobs for conversion and LP orifice installation tool



DUAL-OUTLET K00AA5617

- Connects built-in grill and side burner to one LP Tank
- Only fits models ending in "17" or higher
- Includes LP gas regulator and dual outlet hose assembly, tank retention hook, LP orifices and orifice tool

ACCESSORIES

EZ GRILLING SYSTEM



FEATURES:

- Constructed with premium 304 stainless steel
- Easy-to-use and clean
- Dishwasher-safe

Add more flavor and versatility to the grill with the SABER® EZ Grilling System. Use juice, wine, beer or other flavored liquids to steam or add wood chips to smoke. Use the EZ Grilling System accessories by themselves or with the Roasting Pan for endless options.



**11-PIECE EZ GRILLING SYSTEM SET
A00AA7818**

- Set includes: roasting pan, cutting board, steamer tray, roast/rib rack, pepper roaster, 2 vegetable baskets and 4 skewers



**ROASTING PAN & CUTTING BOARD
A00AA7018**

- High density polyurethane cutting board
- Heavy-duty riveted handles for easy lifting and carrying



**ROAST & RIB RACK
A00AA7318**

- Add water or wood chips to Roasting Pan for moisture or added smoke flavor
- Reversible design holds ribs, roasts and whole poultry
- Holds up to 6 cuts of ribs or 1 large roast or whole poultry



**VEGETABLE BASKET
A00AA7518**

- Small slots to evenly grill or boil seafood and vegetables



**SKEWER & SLIDER SET
A00AA7218**

- Set of 4 skewers with sliders to easily remove food
- Flat tines keep food from falling off or rotating during grilling



**DOUBLE PEPPER ROASTER
A00AA7418**

- Add wood chips to Roasting Pan for added smoke flavor
- 2 racks in 1 - bottom slides out to grill up to 24 peppers



**STEAMER TRAY
A00AA7118**

- Add water or wood chips to Roasting Pan for added flavor
- Easily grill seafood and vegetables
- Small slots allow juices to drip without food falling into the grates



**TURKEY ROASTING RACK
A00AA8119**

- Reversible design holds an 18-pound turkey, up to 7 racks of ribs, or a large roast

COVERS



FEATURES:

- Black marine-grade polyester resists fading, mildew, cold-cracking and repels water
- Handle for easy removal
- 3-year warranty

2-BURNER GRILL COVER - A33ZZ0118

49 1/2" W x 26" D x 48" H

3-BURNER GRILL COVER - A50ZZ0118

57 1/2" W x 26" D x 48" H

4-BURNER GRILL COVER - A67ZZ0118

66 3/32" W x 26" D x 48" H

3-BURNER BUILT-IN GRILL COVER - A50ZZ0518

36 1/2" W x 26" D x 21 5/8" H

4-BURNER BUILT-IN GRILL COVER - A67ZZ0418

36 3/4" W x 26" D x 21 5/8" H

DUAL SIDE BURNER COVER - K00ZZ3918

27 1/4" W x 20 1/4" D x 10 1/2" H



SABER[®]

sabergrills.com